

# INOVAR FLOOR

Longer Life. Lasting Impressions

2019-20



**SU' VENEERS**  
SIGNATURE SURFACES



## TABLE OF CONTENT

|                                     |       |
|-------------------------------------|-------|
| Hybrid Engineered Floor - Ativo     | 10-11 |
| Bamboo Flooring                     | 12-13 |
| Laminate Flooring - Original Series | 14-15 |
| Laminate Horizon Series             | 16-17 |
| Vinyl - Luxury Vinyl Tile           | 18-19 |
| Vinyl - SPC Series                  | 20-21 |
| Nature Deck - Outdoor Series        | 22-23 |
| Ceilings & Claddings                | 24-25 |



## THE COMPANY

Established in 1996, Inovar is a well-respected pioneer in the laminate flooring industry in Asia. With its flagship showroom in Petaling Jaya, Malaysia and regional offices in India, Thailand, Vietnam, Singaporre, Taiwan, Australia, Cambodia and Indonesia, Inovar has its headquarters in Bestari Jaya - about 60km from Kuala Lumpur, Malaysia - incorporating a well-equipped factory, with advance German technology.

Producing the world-renowned brand Inovar Floor, it has come a long way in establishing a global presence as a leading manufacturer of superior water-resistant laminate flooring and it is also the first company in Asia to successfully develop the highly-acclaimed Super E0 F-4star quality laminate flooring for the Japanese market.

Through hardwork and preserverance while also diligently working closely with our customers and business partners, Inovar Floor is able to meet the demands of discerning customers globally and it is now widely-recognized as a premium brand in laminate flooring in the markets that it serves. In addition, Inovar Floor has also been certified as the No. 1 Brand of Laminate Flooring in Japan based on a report published by a treputable research firm. With a highly-experienced management team, a committed and dedicated staff force, and strong support from its investors, business partners and customers, Inovar Floor is now a leading floor covering brand.

### AWARDS & ACHIEVEMENTS

BEST BRAND IN FLOOR COVERING SOLUTION  
FOR 11 YEARS CONSECUTIVELY!

INOVAR has been awarded the Brand of  
Distinction - Best Brand in Floor Covering  
Solutions by The Brandlaureate from 2007 to 2019.





## LONGER LIFE. LASTING IMPRESSIONS

Acclaimed as one of the world's leading producers and exporters of high quality laminate flooring, Inovar now offers various floor covering products namely **Engineered Wood, Bamboo Flooring, LVT Series, Outdoor Deck & Ceiling & Claddings** that are created to fit most interior designs styles and decor concepts to give your home or business premise a distinctively timeless yet elegant ambience.

From classy, evergreen colors to modern, simplistic designs or a rustic yet natural look, Inovar Flooring helps create a lasting impression for your interior. Our globally-renowned quality makes it a durable investment that will surpass any other floor covering material of its class.

Produced only with environmentally friendly processes using raw materials from sustainable sources, Inovar Flooring, fits perfectly into your lifestyle while being totally eco-friendly and it has been certified to be JIS-F-4star complaint in Japan.

We invite you to start exploring the world of Inovar Flooring, and be delighted with how we can add value and create a significantly better environment for your home, business premise or your development project.

Acclaimed as one of the world's leading producers and exporters of high quality flooring, Inovar offers various product series that are created to fit most interior designs styles and decor concepts to give your home or business premise a distinctively timeless yet elegant ambience.

From classy, evergreen colors to modern, simplistic designs or a rustic yet natural look, Inovar Flooring helps create a lasting impression for your interior. Our globally-renowned quality makes it a durable investment that will surpass any other floor covering material of its class.

Produced only with environmentally friendly processes using raw materials from sustainable sources, Inovar Flooring, fits perfectly into your lifestyle while being totally eco-friendly and it has been certified to be JIS-F-4star complaint in Japan.

We invite you to start exploring the world of Inovar Flooring, and be delighted with how we can add value and create a significantly better environment for your home, business premise or your development project.





## WHY INOVAR FLOORS ?

With years of extensive research and development, reliable manufacturing processes, a solid Direct Manufacturer's Warranty, and finally, a multi-award winning brand, the question is really - ,Why Not?"

It goes without saying that only a company built on solid foundation and with an equally strong R & D background and committed management and workforce can afford to give you such peace of mind, and this is exactly what you get when you make Inovar Flooring your choice.

### More Durable & More Impact Resistant

Made from eco-friendly high quality materials, Inovar Flooring is significantly stronger than any conventional floor covering material - making it more durable & more impact resistant.

### Superior Water Resistant Quality

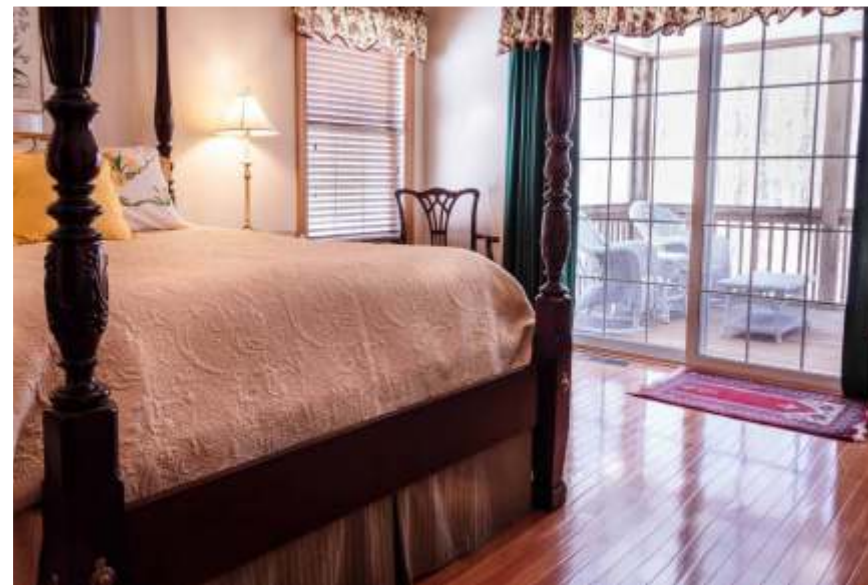
The unique raw materials that we use make Inovar Flooring the most water resistant flooring you can find in the market. In fact, our factory has been recognized as the world's largest exporter of superior water resistant quality flooring.

### Extensively-used in Projects

The superb quality of Inovar Flooring has made it the preferred floor covering material in many projects not only within its homeground of Southeast Asia, but also all over the world. Inovar Flooring helps to accentuate the value of your property and at the same time, create a lasting impression.

### Convenient Regional Accessibility

With its headquarters and a flagship showroom and distribution centre strategically-located in Malaysia, Inovar has set up an extensive regional network to serve you better, with its own offices and distribution facility in various countries, namely, India, Thailand, Singapore, Vietnam, Taiwan, Australia, Cambodia, Indonesia and more to come. With such commitment, you can rest assured that Inovar will be focused on creating high quality products that meet international standards.





## Engineered Wood - Hybrid Series

ATIVO - X50



HEB 1237

Sherry Oak



HEB 2540 American Walnut



HEB 1252

Fresco



HEB 1242 Brown Old Wood



HEB 1230

Charred Oak



HEB 4528

Oak Natural

## Engineered Wood - Hybrid Series

ATIVO - X50

### Stable Structure, Fine Material

A selection of Australian pine and eucalyptus wood flooring materials, the use of wood to maintain the natural texture of the wood.

### Extra Thick Surface, Releasing Higher Value

The use of natural wood surface layer excites gorgeous beauty and good wear resistance, providing an excellent carrier for more floor appearance processing technology and releasing the natural value beyond the national standard.

### Crisscrossed, Superior Structural Stability

The new three-layer solid wood floor, with different wood species between the layers, is crisscrossed and overlapped, so that the woods are involved with each other, effectively overcoming the tension of the wood itself and ensuring the stability of the floor.

### Environment Friendly

The use of advanced environmentally friendly adhesives, strong adhesion, no degumming, no shrinkage, peeling phenomenon, the finished formaldehyde emission reached the European E0 environmental standards.

### Flexible Installation

The installation only needs to put the two pieces of the floor up and down to close the joints, and the real tight seams can avoid dust accumulation and bacteria growth. Convenient, fast, and labor-saving, the lock can also make the floor reuse, so it is more environmentally friendly.

### Easy Maintenance

No varnish or polish is needed compared to solid engineered floor.

### Special Features

- fi Durable and Affordable
- fi Low Lifetime Maintenance Cost
- fi Superior stability with resistance to changes in temperatures and humidity
- fi Significantly increase the market value of a home because of its durable flooring material.





# Bamboo Flooring

## New Dimensions in Flooring

Inovar Floors caters to flooring, ceiling and cladding solutions exclusively tailored to suit your needs for different spaces: outdoors, indoors, moderate to high traffic and residential to commercial areas. Our decors come with contemporary looks, exceptional durability, eco credentials and hassle-free maintenance, bringing you a remarkable assortment of decors to transform any space.

Need more contemporary yet green flooring choices for your interiors? Inovaris Bamboo Flooring is an environmentally friendly and smart choice to enhance your interiors with its naturally suave looks. Our stylish floors are created only from selected Moso species so as to bring you unsurpassed quality.

The Janka hardness test is used to measure the resistance of a sample of wood to denting and wear. A common use of Janka hardness ratings is to determine whether a species is suitable for use as flooring, and strand woven bamboo scores the highest for its strength.

We use the innovative strand woven technology to produce a high density bamboo composite which is remarkably durable. Our bamboo floors are created with sophisticated features utilizing its naturally high tensile strength. Also, the anti-scratch overlay makes it wear resistant while the patented glueless interlocking system ensures you of easy installation and worry-free maintenance. Sourced from sustainable bamboo plantations, these floors are extremely eco-friendly and can set the perfect backdrop for innovative interior concepts and ideas.

Strand woven bamboo is harder than Solid wood, giving you long lasting floors. Recommended for homes, showrooms, hotel rooms and other interior spaces excluding wet areas.

Utility Class: AC4  
Dimension: 1850 mm (L) x 125 mm (W) x 14 mm (T)  
Panels / Carton: 6 Panels / Carton (1.39 sqm / 14.96 sq ft)  
Formaldehyde: E0 Grade  
Surface Finish: 30 ± 5% Gloss with anti-scratch coating



# Bamboo Flooring

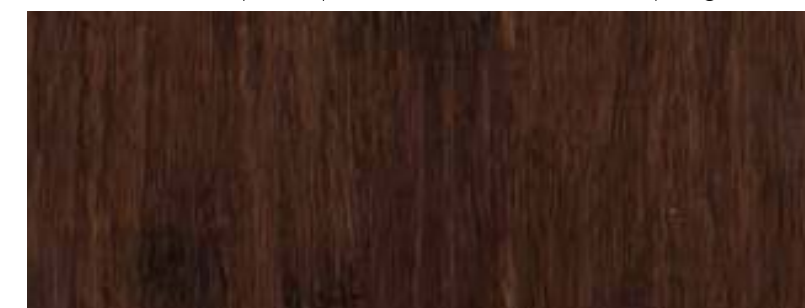
## In Elegant Styles



BM 3600 Earth (Coffee)



BM 3611 Bambosa (Jungle Wood)



BM 3811

Walnut Naturelle



Stain Resistant



Hygienic & Easy to Clean



Resistant to Cigarette Burn



Stands up to Wear & Tear



Does not breed Dust-Mites



## Laminate Flooring

Wood Embossed & Wood Grain Surface Finish



Inovar Floors caters to flooring, ceiling and cladding solutions exclusively tailored to suit your needs for different spaces: outdoors, indoors, moderate to high traffic and residential to commercial areas. Our decors come with contemporary looks, exceptional durability, eco credentials and hassle-free maintenance, bringing you a remarkable assortment of decors to transform any space.

Looking for quality laminates that fit your style? Inovar Laminate Floors are created with innovative features so that your floor retains its elegance for years. The anti-abrasive protective overlay of aluminium oxide particles makes your floor scuff and wear resistant. Further, the unique WaxGuard+® ensures edge protection, while the durable CoreGuard® HDF, made from sustainable resources, brings you highly moisture resistant floors. The optional SilenPro® layer enhances its sound absorbing properties, bringing you a quieter and more comfortable ambience to live in.

## Original Series

Wood Embossed & Wood Grain Surface Finish



FV 822

Safari Walnut



FV 929

Frozen Chocolate



MF 300

Valencia Oak



FV 330

Planked Oak



MF 332

Monument Oak



MF 336

Congo Oak



MF 703

Glen Doussie



MF 806

Montreux Walnut



MF 879

New Sumatran Teak



MF 801

Semarang Teak

**WaxGuard+®**  
for edge protection



optional layer for  
sound protection

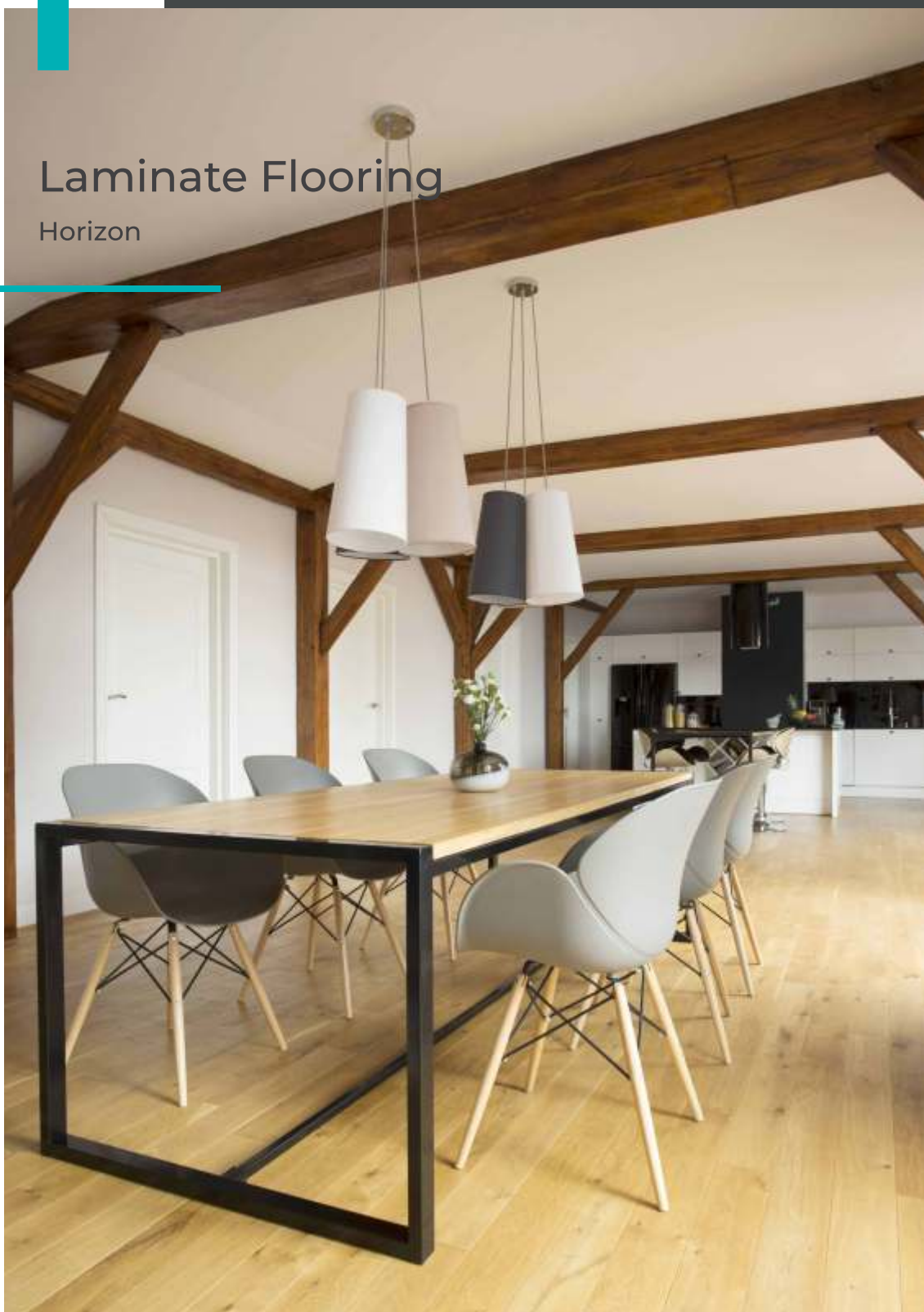


for superior  
moisture resistance



## Laminate Flooring

### Horizon



*With embossed-in-register and subtle bevelling on all edges, this is truly an outstanding series.*

#### WaxGuard Plus

Applied using the latest and enhanced vacumat technology, Waxguard Plus forms a layer of paraffin over the interlocking joint of the planks. This reduces the squeaking sound caused by applied pressure and improves water resistance of the floor.

#### Direct Factory Warranty

Established over 20 years in Malaysia, all INOVAR products are covered by our direct manufacturer's warranties. You can be assured that our products completed strict quality control procedures before they reach you.

Dimension: 1215 mm (L) x 195 mm (W) x 8 mm (T)  
Class of Usage: 31/23, Abrasion Class AC4, 45 Beveled, EIR

**WaxGuard+**  
for edge protection



optional layer for  
sound protection



for superior  
moisture resistance

## Horizon

Embossed in Registered Surface



KHR 5603 Laguna



KHR 5607 Borneo



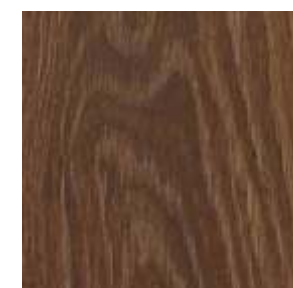
KHR 6097 Regency



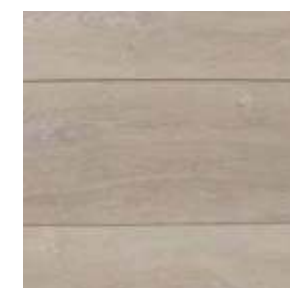
KHR 2269 Millenium



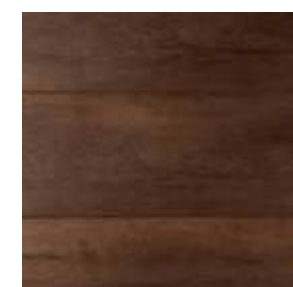
KHR 5610 Casper



KHR 8368 Antique Rosewood



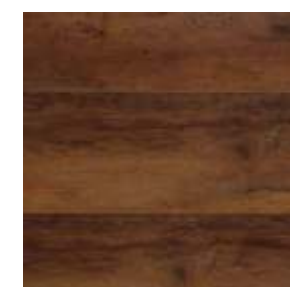
KHR 8537 Fossil



KHR 8535 Venus



KHR 8537 Fossil



KHR 8537 Fossil



KHR 8537 Fossil

**True-to-Life Designs** Nothing comes close to this real effect. The new WoodTouch surface on the Horizon series is the most advanced Embossed-in-Register (EIR) technology. Its subtle yet natural bevelling on all edges makes each plank look as natural as real wood flooring.



## LVT Series

Wood Embossed Surface Finish



LG 5343 Vintage Oak



LG 7236 Spotted Gum



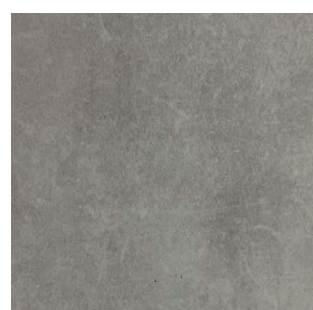
LG 7235 Brush Box



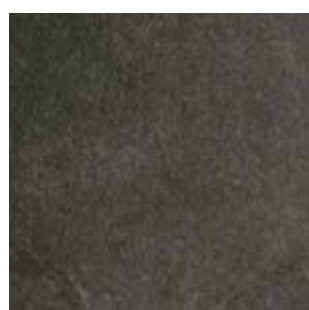
LG 8273 Milky Way



LG 5483 Satin Wood



LTB 8823 Greystone



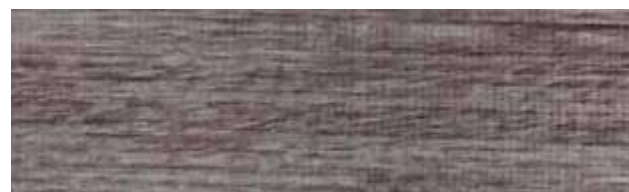
LTB 8826 Graphite



LG 5444 Hacienda



LG 5375 Dark Oak



LG 5484 Jackson



LG 5482 Limestone



LG 5373 Legno

## LVT Series

Wood Embossed Surface Finish

Thinking about Luxury Vinyl flooring manufacturers in India that could make life easier? Why not try our range of Luxury Vinyl Tiles? Inovar brings you high end LVT with unparalleled looks and easy maintenance, with a thickness of 4 mm for the first time in India for better performance when compared to regular PVC tiles.

Our sophisticated features like the unique nano-silver technology and enhanced ceramic wear layer ensure that your Vinyl floor is remarkably resistant to wear and spillage and suitable even for high traffic areas. The core is made from high-grade post consumer recyclable materials so that your floor is both durable and environmental friendly, while they can be easily glued.

Built to last even in high-traffic moisture-prone areas, these floors are available in the stylish Original and InVogue ranges. So you can now choose from the exclusive vintage looks to realistic wood textures, anything that fits just your style. Our 15 years commercial warranty will assure you of even greater peace of mind.

Dimension: 1,219.20 mm (L) x 177.80 mm (W) x 3 mm (Thickness) [ 7" x 48" ]  
Coverage / Carton: 3.2516 sqm / 35.0 sq ft





## SPC Series

Wood Embossed Surface Finish



LQX 3159 Arcadia



LQX3168 Havana



LQX 2824 Aurora



LQX 2841 Oakville



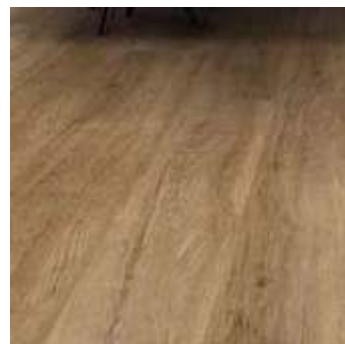
LQX 2842 Starlite



LQX 2844 Rockhills



LQX 3149 Frozen



LQX 3158 Chinos



## SPC Series

Wood Embossed Surface Finish

*Provides a greater dimensional stability which eliminates telegraphing effect on floors. This will give you a more pleasing aesthetics for larger rooms or areas, especially for commercial.*

### Exceptional Stability

Designed to withstand changing temperature conditions, unlike regular vinyl floors. The stability of the plank makes it a better option for larger floor area.

### XL Plank

Extra large vinyl planks to give you an impression of a spacious and elegant interior. Each vinyl plank is further enhanced with a satin matte finish on its surface.

### Anti-Telegraphy

Made from rigid vinyl with a solid core that has anti-telegraphy properties and is easy to install. This feature effectively eliminates print-through effects caused by subfloor with uneven surfaces or tile joints.

### Sound Reduction

Reduces footfall noise with its 1.5mm acoustic underlayment and gives your barefoot a comfortable walking experience. The vinyl floor is quiet even when walking with your shoes on.

### Phthalate Free

The vinyl planks are free from harmful phthalate and is certified A+ for low level emission of volatile substances. This helps eliminates eye and respiratory irritations caused by volatile organic compounds (VOC) fumes.

Dimension: 1511 mm (L) x 229 mm (W) x 6.5 mm (T) (WL: 0.55 mm)  
Inovar Floor Galaxy XL SVT 6.5 mm (Solid Vinyl Tile)



# Nature Deck

## New Dimensions in Flooring

Inovar Floors caters to flooring, ceiling and cladding solutions exclusively tailored to suit your needs for different spaces: outdoors, indoors, moderate to high traffic and residential to commercial areas. Our decors come with contemporary looks, exceptional durability, eco credentials and hassle-free maintenance, bringing you a remarkable assortment of decors to transform any space.

Let our durable decking floors set the perfect backdrop for you to enjoy the outdoors! From classic to modern designs, our WPC and timber decking provide a non-slip surface with no visible screw heads and require no special treatment for maintenance.

We now bring you revolutionary decking engineered for high traffic and outdoor exposure with the Exclusive Invisible Fastening System. The floor surface has gaps small enough to block rings, coins, leaf-litter, food and other small objects from falling through, yet optimal for water drainage. Also, these floors use protective treatments for burrowing insects, fungi and contact with ground and fresh water while the brushed surface and rounded-off lateral edges facilitate underfoot comfort.

These exciting features offer advantages in its safety and maintenance, and the wear resistant surface withstands outdoor conditions with great ease. So you can now explore the stunning range of decking in a choice of designs to enhance your outdoor space.

Recommended for verandas, porticos, pool sides and other outdoor spaces.

Innovation that brings you outdoor decking that is incredibly easy to install

Dimension: 2900 mm (L) x 150 mm (W) x 21 mm (T)  
1 Plank = 4.68 Sq. Ft.



# Nature Deck

## In Elegant Styles



WAD 2266

Natur IPE



WAD 2277

Natur Teak



Stain  
Resistant



Hygienic &  
Easy to Clean



Ultra Violent  
Resistant



Stands up to  
Wear & Tear



Does not breed  
Dust-Mites



## Ceilings & Claddings

### New Dimensions in Cladding

Enhance your interiors with ease with our WPC and PVC ceiling and cladding solutions! Created with materials of high durability for indoors and outdoors, these panels use the clip system for easy installation and maintenance.

Further, the overlay makes it resistant to household chemicals ensuring easy maintenance. The core is a light-weight composite made from recycled plastics and wood from the construction industry and is resistant to moisture and insects.

Available in a vibrant choice of colours and finishes, we bring you the flexibility of customizing WPC and PVC ceiling and cladding solutions exclusively to beautify your space.

Recommended for interior ceilings and wall ceilings of villas, homes and balconies.

Dimension: 2750 mm (L) x 119 mm (W) x 12 mm (T)



## Ceilings & Claddings

### In Elegant Styles



WPC Cladding

Sapeli



WPC Cladding

Cherry



WPC Cladding

Walnut



Stain  
Resistant



Hygienic &  
Easy to Clean



Ultra Violet  
Resistant

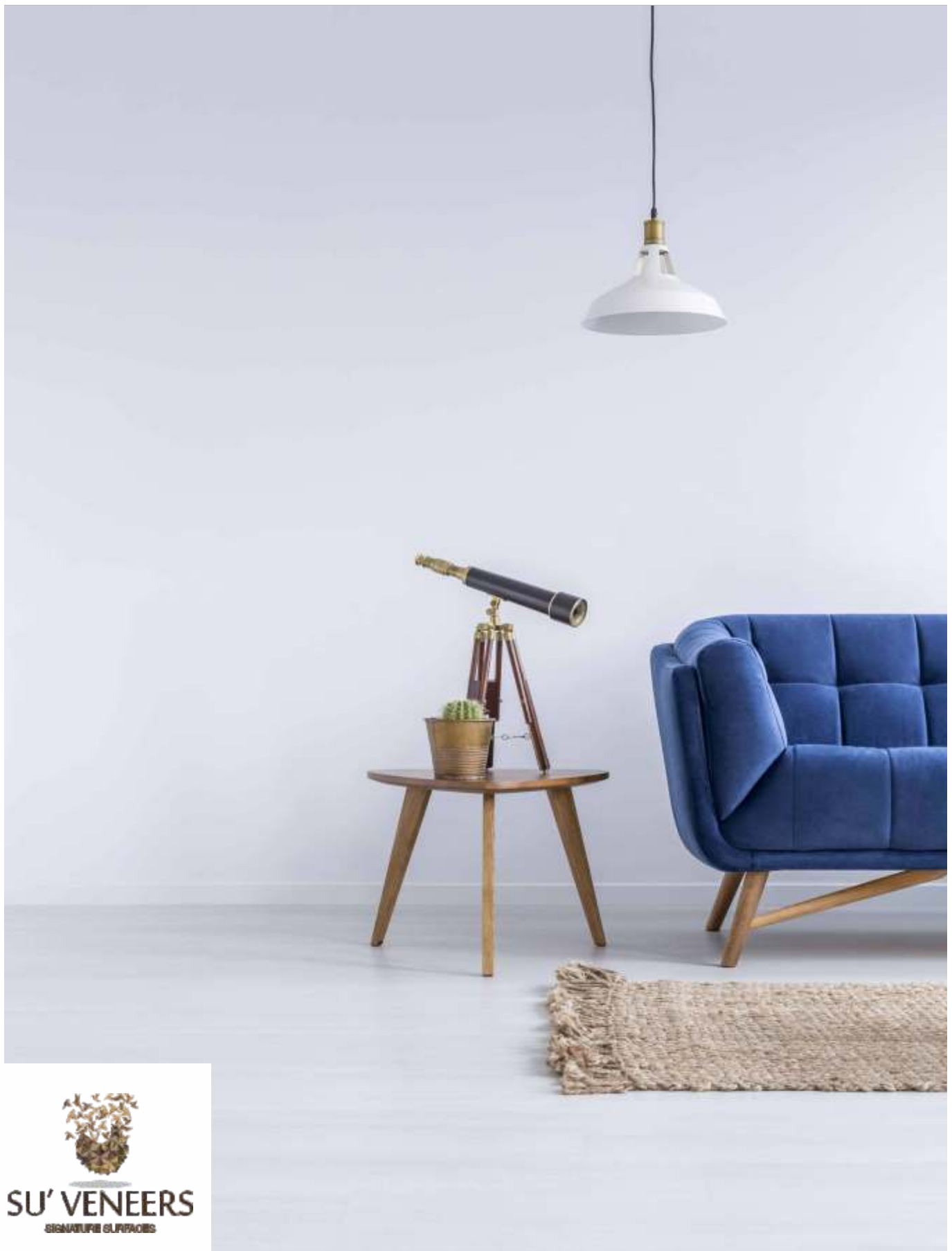


Resistant to  
Household  
Chemicals



Does not breed  
Dust-Mites





A: Ness Baug, Shop No. A,B,C/ 4-5, Nana Chowk, Grant Road (West), Mumbai - 400007.  
(Maharashtra-India). | T: +91-22-23880548 / 23860548 | E: sales@suveneers.com

A: Suveneers NX, Shop No 1,2,3, Mohan Centre Building, Opposite Railway Fatak,  
Vile Parle (West), Mumbai - 400056. | T: +91-22-26121693 / 26121692 | E: suveneersnx@rediffmail.com

[www.suveneers.com](http://www.suveneers.com) | Follow us on [f](#) [in](#) [t](#) [i](#) [p](#)