



SU' VENEERS
SIGNATURE SURFACES

NATURAL WOOD FLOOR

Slim Collection

VOLUME I

ego



SU' VENEERS
SIGNATURE SURFACES



THE SIZE 0 FOR FLOORS. PRESENTING THE SLIM COLLECTION FROM EGO.

When everything is going stylishly slim, why not your wooden flooring. Presenting skillfully engineered wooden flooring from the Natural Wood Collection – the Slim Collection. Specifically developed using the latest technologies and innovation, it might just be what you have been looking for.

With more than 20 years of experience, Ego has moved beyond being just a name in the Indian interior design industry. With an extensive range of laminated wooden floor, engineered flooring, solid wood flooring and deck, the company offers the most comprehensive wooden flooring solutions. In keeping with this, Ego is proud to present, yet another innovation in the engineered wooden floor industry, the Slim Collection.

SLIM COLLECTION



► SLIM COLLECTION

The Slim Collection comes with a wide variety of colors, species and finishes to create a unique look. Give your floor a slim and sleek wood finish for a true touch of elegance. It has a real wood top of about 2 mm and a much narrower width, making it slim. It also has many species of timber put together, to bring both beauty and stability in one product. It is eco-friendly and less susceptible to the negative effects of moisture because of its unique construction and intelligent design. Cork layers below the floor actually reduces the noise by 50% and doesn't let moisture of any kind seep into the floor, making the floor last longer.

The floor is stable because of the HDF. They don't warp or creek like other wooden floors. Moreover, the unique Clic system makes it easy to fix or remove. Try using it on a narrow room to make it look bigger while the European finish on the surface makes it look sleeker. The collection is easy on the pocket and come with a 10 year residential warranty 3 year commercial warranty.

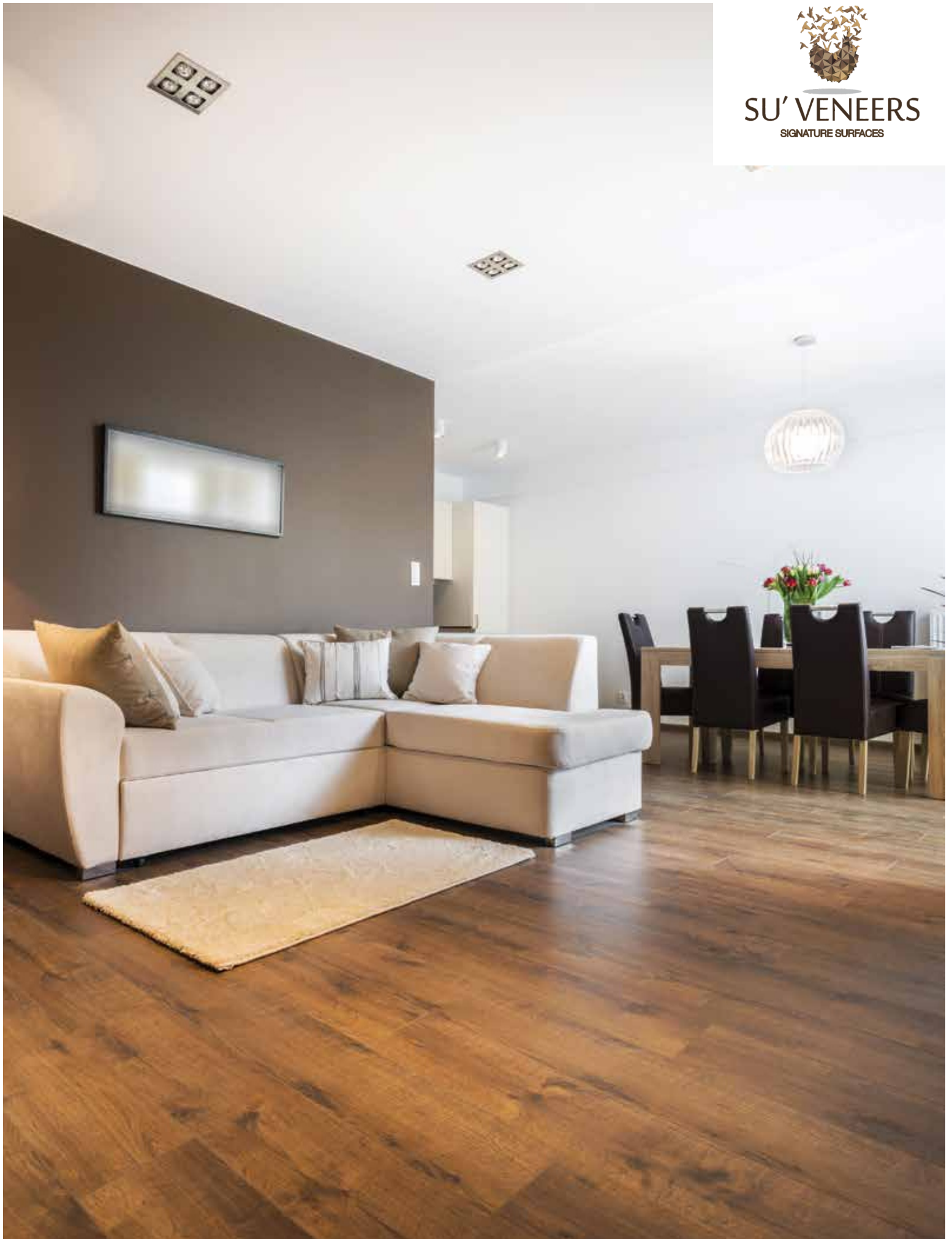
► FEATURES

- Made of finest material and with advanced technology
- Lab-designed protection layer on the bottom
- Extremely stable performance, providing a perfect base for your home
- Dimension – 12(2+8+2)*127*400-1200RL, 12(2+8+2)*121*910mm
- Click system
- Cork sheet backing to reduce sound and act as moisture barrier.

ITEM	REQUIREMENT	RESULT	BACKER
NUTS	SINGLE MAX DIAMETER, MM	4	50
HOLE	SINGLE MAX DIAMETER, MM	2, NEED FILLED	15
LIGHT BARK	SINGLE MAX LENGTH, MM	30	NO LIMITED
SINGLE MAX WIDTH, MM	4		
DARK BARK	SINGLE MAX LENGTH, MM	15	NO LIMITED
SINGLE MAX WIDTH, MM	2		
RESINOCYST, RESIN CHANEL	SINGLE MAX LENGTH, MM	5<1	NO LIMITED
COLOR CHANGING	LESS THAN PLANK AREA, %	20, COLORS OF SURFACE IS COORDINATED	
CRACK		NOT ALLOWED	
ASSEMBLE GAP, HORIZONTAL	SINGLE MAX WIDTH, MM	0.5	
SINGLE MAX WIDTH, LESS THAN LENGTH OF PLANK, %		20	
ASSEMBLE GAP, VERTICAL	SINGLE MAX WIDTH, MM	0.5	
BUBBLE DELAMINATION		NOT ALLOWED	
EDGE MISSING		NOT ALLOWED	
LACQUER BUBBLE	<0.5MM	LESS THAN 3 FOR EACH PLANK	
PIN HOLE	<0.5MM	LESS THAN 4 FOR EACH PLANK	
MOISTURE CONTENT	8-12%	Average 8.8%	



SU' VENEERS
SIGNATURE SURFACES



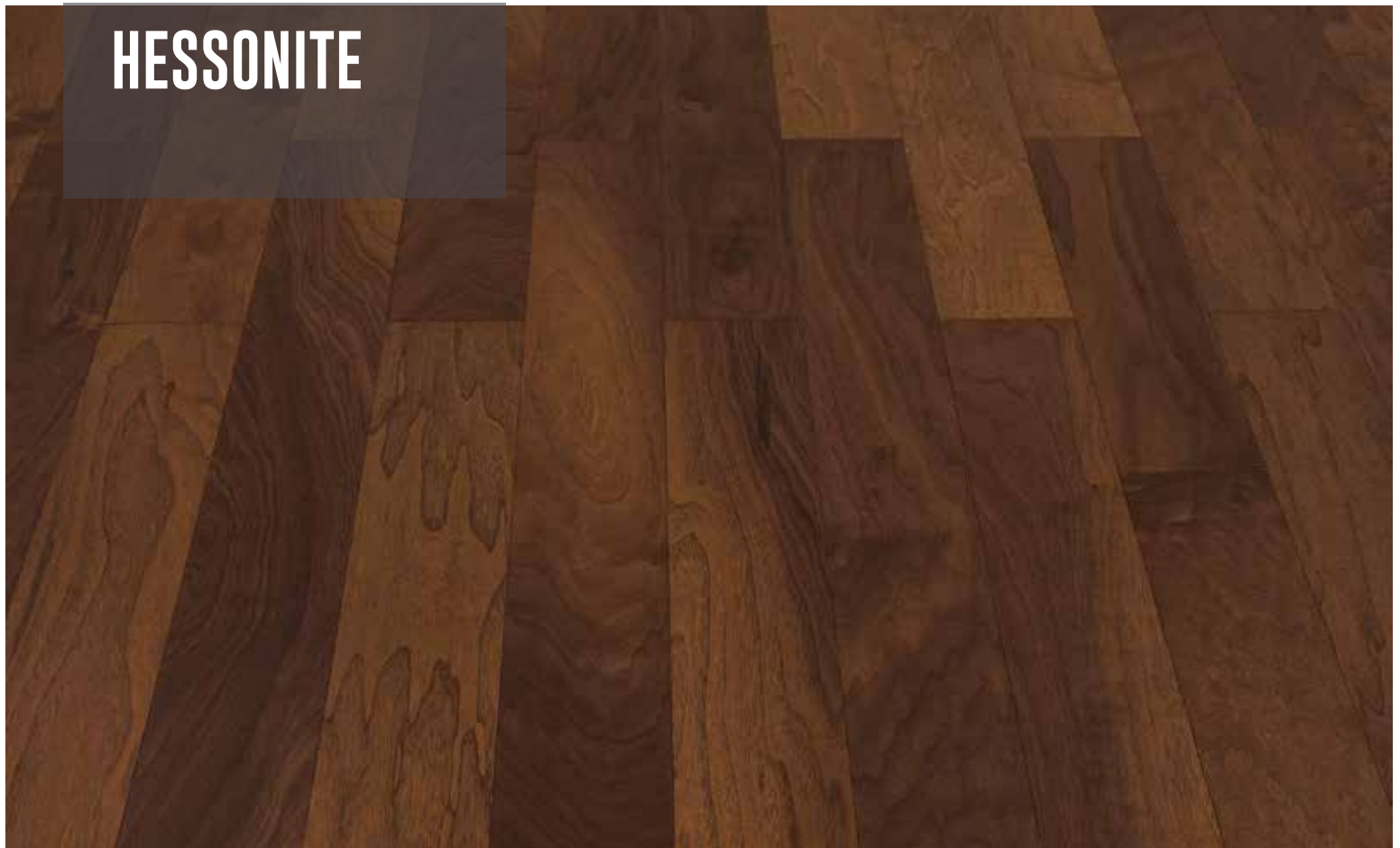


SU' VENEERS
SIGNATURE SURFACES

HEMALITE



HESSONITE





SU' VENEERS
SIGNATURE SURFACES

CARNELIAN



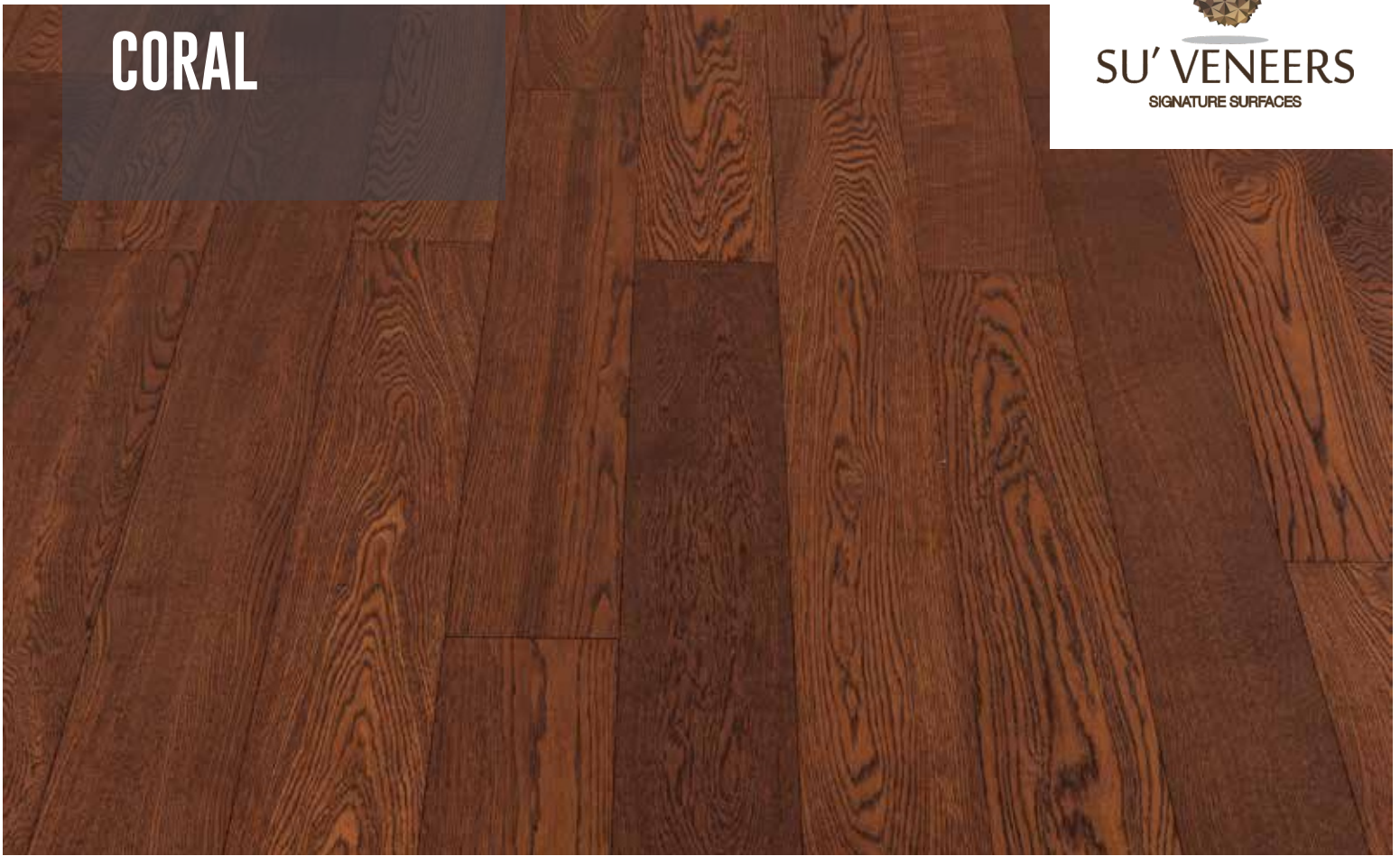
CITRINE





SU' VENEERS
SIGNATURE SURFACES

CORAL



PEARL





SU' VENEERS
SIGNATURE SURFACES

ON

AMBER



SU' VENEERS
SIGNATURE SURFACES

ALDAMINE



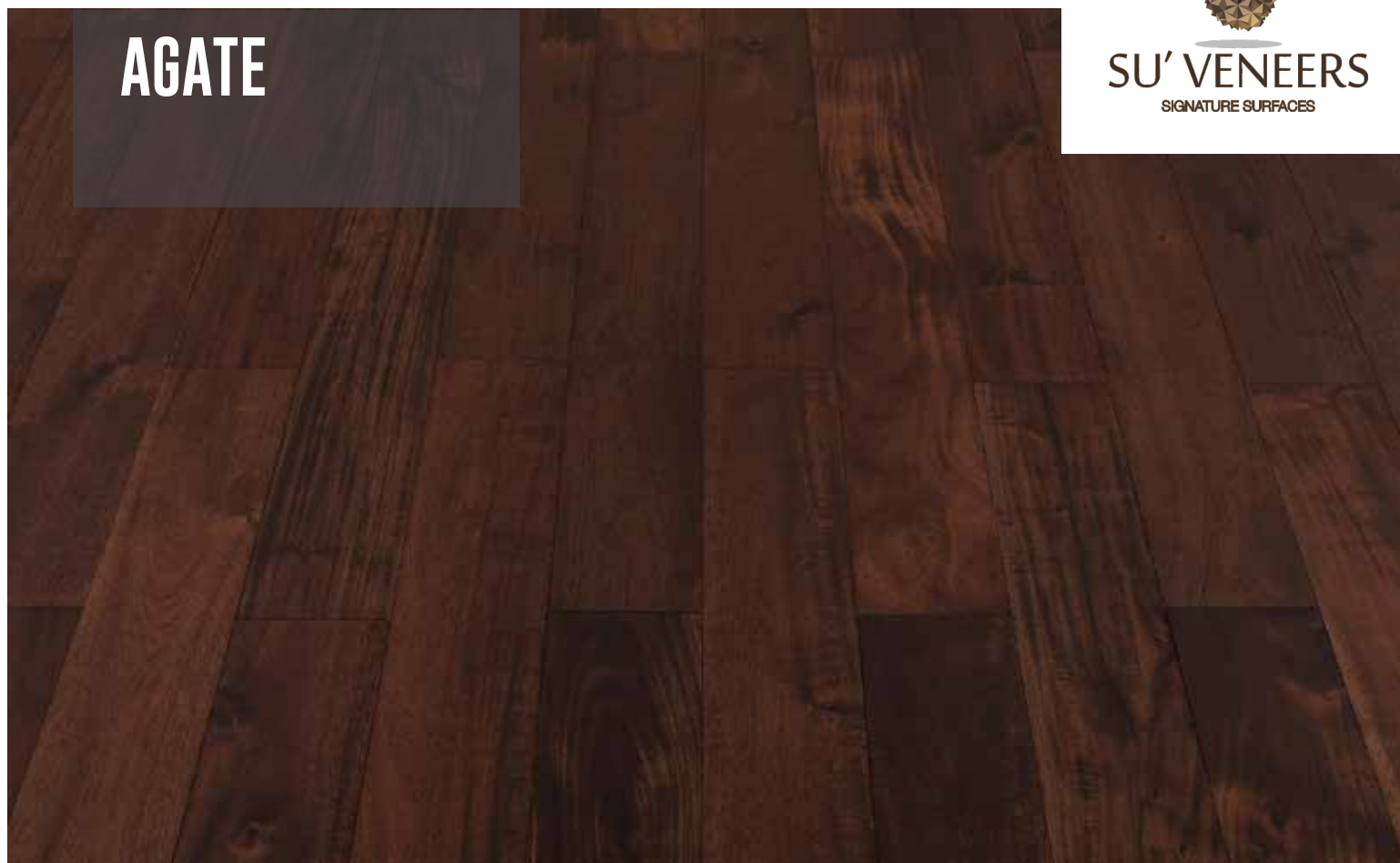
OPAL



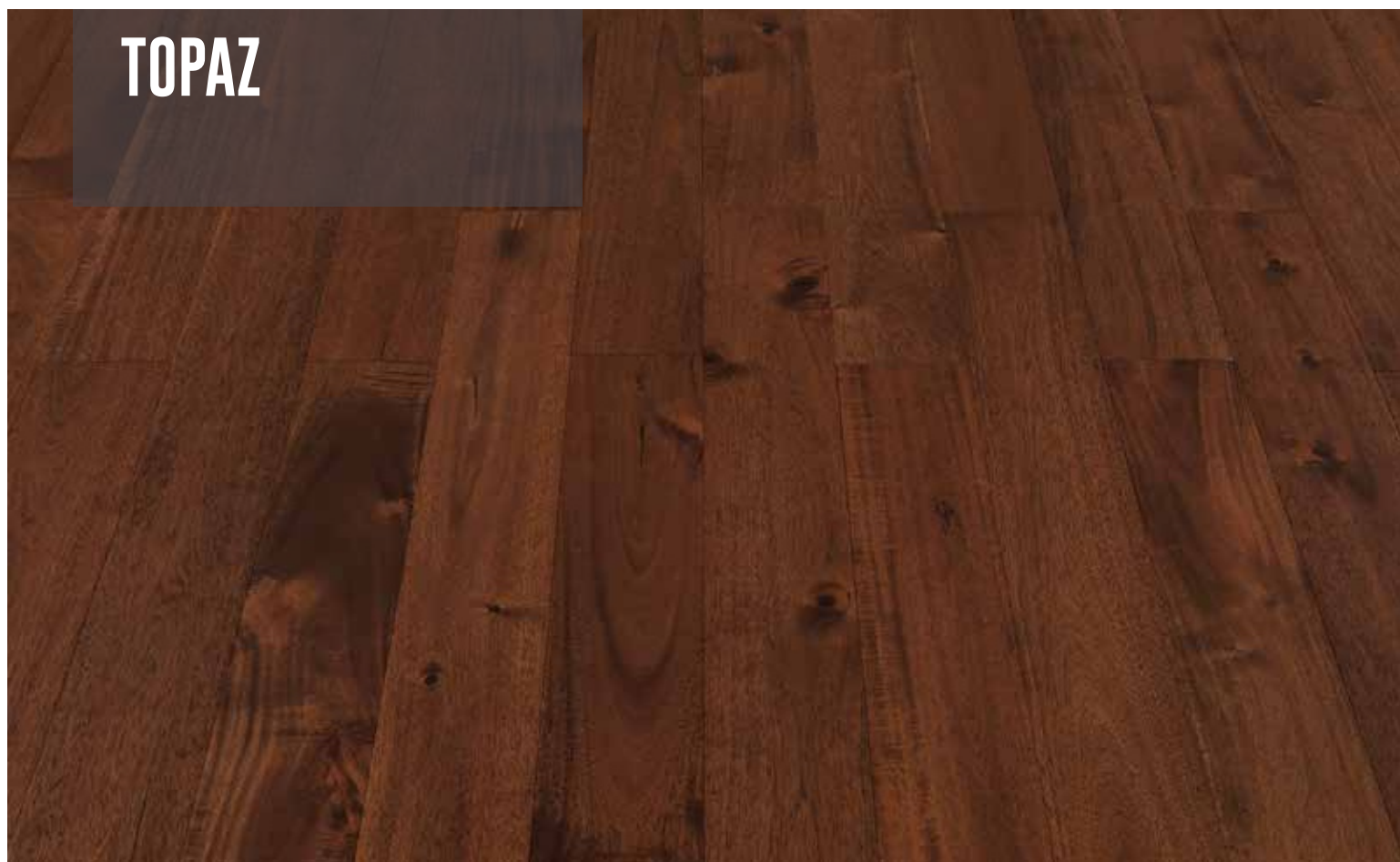


SU' VENEERS
SIGNATURE SURFACES

AGATE



TOPAZ



GARNET



SU' VENEERS
SIGNATURE SURFACES





SU' VENEERS
SIGNATURE SURFACES





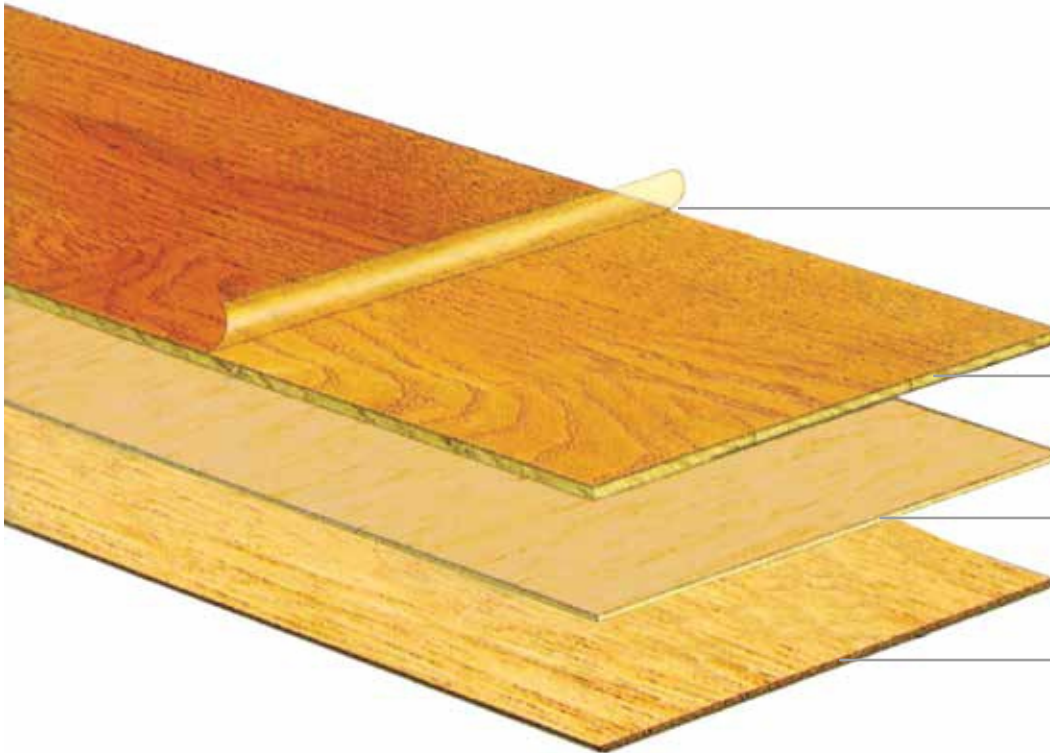
SU' VENEERS
SIGNATURE SURFACES

EGO RETAIL NETWORK



PANEL CONSTRUCTION

15

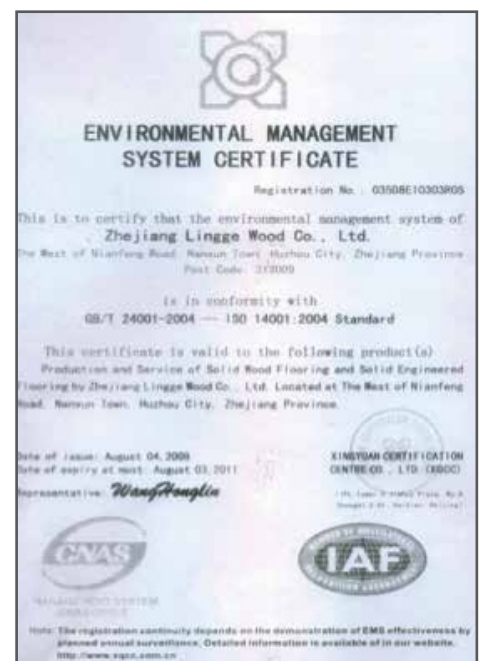


MULTI - LAYERS OF
HIGH QUALITY FINISH

HARDWOOD SURFACE

HDF

CORKSHEET



EGO PROFILES

- Ego Profile match our flooring in quality and shade. These profiles come in various shapes and cover all kinds of corners. Unlike locally procured profiles, Ego profiles ensure that the warranty on Ego flooring remains intact as long as its valid. Ego profile are 0.6mm thick with a high grade fiber board which makes it highly durable and long lasting. These profile come with channel which are placed behind them so that no nail marks are seen permanently. It is the only flooring company that has its own manufacturing unit with 30 shades available to choose from



T-Profile



Reducer Profile



Skirting



Stair Nose



End Profile



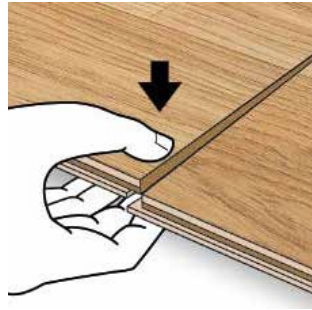
Beading

Note : These profiles can be made with 100% wood and can be polished to match the flooring colors.

INSTALLATION

17

Installing a floor becomes child's play: A fingertip is enough to join panels – simply unpack, lay, snap together and done. No effort involved – your hammer and block can stay in the tool box.



GENERAL MAINTENANCE

GENERAL

- It is the general perception that maintenance of woodflooring is costly and tedious. However, being coated with Anti-Scratch finishes, users can now enjoy the beautiful and easily maintained Ego Naturalwood floor hassle-free.
- Ego Naturalwood floor is suitable for installation in almost any residential building.
- It can be installed over concrete slabs or hard surface floors.
- However, wooden floors are sensitive to wetness, excessive humidity and excessive drought. At installation, the rule to apply in order to extend the lifetime of the floor is that the relative atmospheric humidity (RH) should be between 45% and 60%.
- Use in Kitchen
- Prevent direct water-contact.

ESTHETIC ATTENTION

- Ego Naturalwood is made entirely of genuine, esthetic and beautiful naturalwood.
- In order to maintain its beauty, placing a quality doormat on both the inside and outside of entrances is recommended to prevent scratches caused by abrasive grit and dirt.
- Being made of genuine wood, every board is unique and therefore no photographs or samples can be exactly reproduced with exact colours, grains and tint.

DO'S

- Support furniture and heavy appliances with wide-bearing, on-staining glides or casters.
- Move appliances/furniture by sliding them slowly over the floor on a clean piece of carpet turned upside-down.
- Place area rugs in high traffic concentrated area to make long term maintenance easier and less expensive.

DON'TS

- Do not wax the floor.
- Avoid spiked-heel shoes, pebbles and other abrasives.
- Do not use steel wool on the floor.
- Do not use soap or detergents on the floor and never pour water directly on to the floor.
- Do not use ammonia-based cleaners.
- Do not use extremely wet mop to clean the floor.

FINISHING

- Anti-Scratch top coat

RECOMMENDED MAINTENANCE

- For general cleaning, use a dust mop or vacuum.
- Keep grit off the floor. Dust, mop or vacuum regularly and keep door mats clean.
- Wipe spills promptly with dry cloth. Use a slightly dampened cloth for sticky spills.
- Should staining occur from food, ink, grease, lipsticks, cigarette burn, crayon, wax or nail polish, the following should be done:
 - Firstly, wipe with damp cloth.
 - If unsuccessful, use mild detergent (PH6-8)
 - If the stain persists, use acetone. Under normal circumstances, acetone should be able to remove the stain.
- Avoid scrubbing with abrasive material and using strong solvent or detergent.

REFINISHING

- Ego Naturalwood floors can be re-sanded and re-finished 2-3 times. However, consultation with specialists is strongly recommended.

RESISTANCE AGAINST



ACETONE



THINNER



FRUIT JUICES



FAT OIL



COFFEE, TEA



ALCOHOLIC
BEVERAGES



PVC
SEALANTS



► **I OBacaRE - FI OORcaRE & FI OOR caRE a TT**

Product description:

Ready to use acrylate dispersion. Protects finished and water-proof surfaces through a care layer from minor scratches and wear marks. Prevents premature wear and increases the lifetime actively. Enhances old dulled floors optically and brings new shine on floors.

Range of use:

For finished hardwood, cork, linoleum, PVC surfaces as well as unglazed stone and other water proof surfaces. FloorCare glossy has a good resistant to alcohol and disinfectants.



► **I OBacaRE - caRE cIEaNER**

Product Description:

Highly concentrated wipe care product. Cleans and protects finished parquet, cork and many other types of flooring. The coefficient of friction for sport floorings acc. To DIN 18032 is being preserved. Increases the slip resistance.

Range of use:

Wipe-over care product for the maintenance of finished Parquet, Hardwood, PVC, CV, Polyolefin, Cork, Linoleum, Rubber, Natural and Artificial Stone.



► **I OBacaRE - cIEaNFi aND REFILL**

Product Description:

Floor - cleaner to spray for quick and easy maintenance - cleanings. Cleans hygienically and dries without streaks.

Range of use:

Suitable for varnished parquet and cork floorings, PVC, polyolefine, linoleum, rubber floorings as well as stone and tiles, CV and laminate.



► **I OBacaRE - cIEaNiNG SET**

Professional quality Cleaning Kit for Wood and cork floors.

Also great for Laminate, Vinyl, PVC, Linoleum, Rubber, Tile and Stone floors. LOBACAREin cleaningKit made in GERMANY- Contains enough LOBACARE Hardwood Floor Cleaner and LOBACARE Refill Concentrate for more than 25,000 sq ft.

- Easily cleans dirt and spills
- Easy to use: sweep or vacuum, spray and mop
- Environmentally friendly and pH neutral
- No streaks or residue



SU' VENEERS
SIGNATURE SURFACES

A: Ness Baug, Shop No. A,B,C/ 4-5, Nana Chowk, Grant Road (West), Mumbai - 400007.
(Maharashtra-India). | T: +91-22-23880548 / 23860548 | E: sales@suveneers.com

A: Suveneers NX, Shop No 1,2,3, Mohan Centre Building, Opposite Railway Fatak,
Vile Parle (West), Mumbai - 400056. | T: +91-22-26121693 / 26121692 | E: suveneersnx@rediffmail.com

www.suveneers.com | Follow us on     